



European Climate, Infrastructure and Environment Executive Agency

Delivering the EU Green Deal



Aneta Willems

Head of Department D

Ecomondo

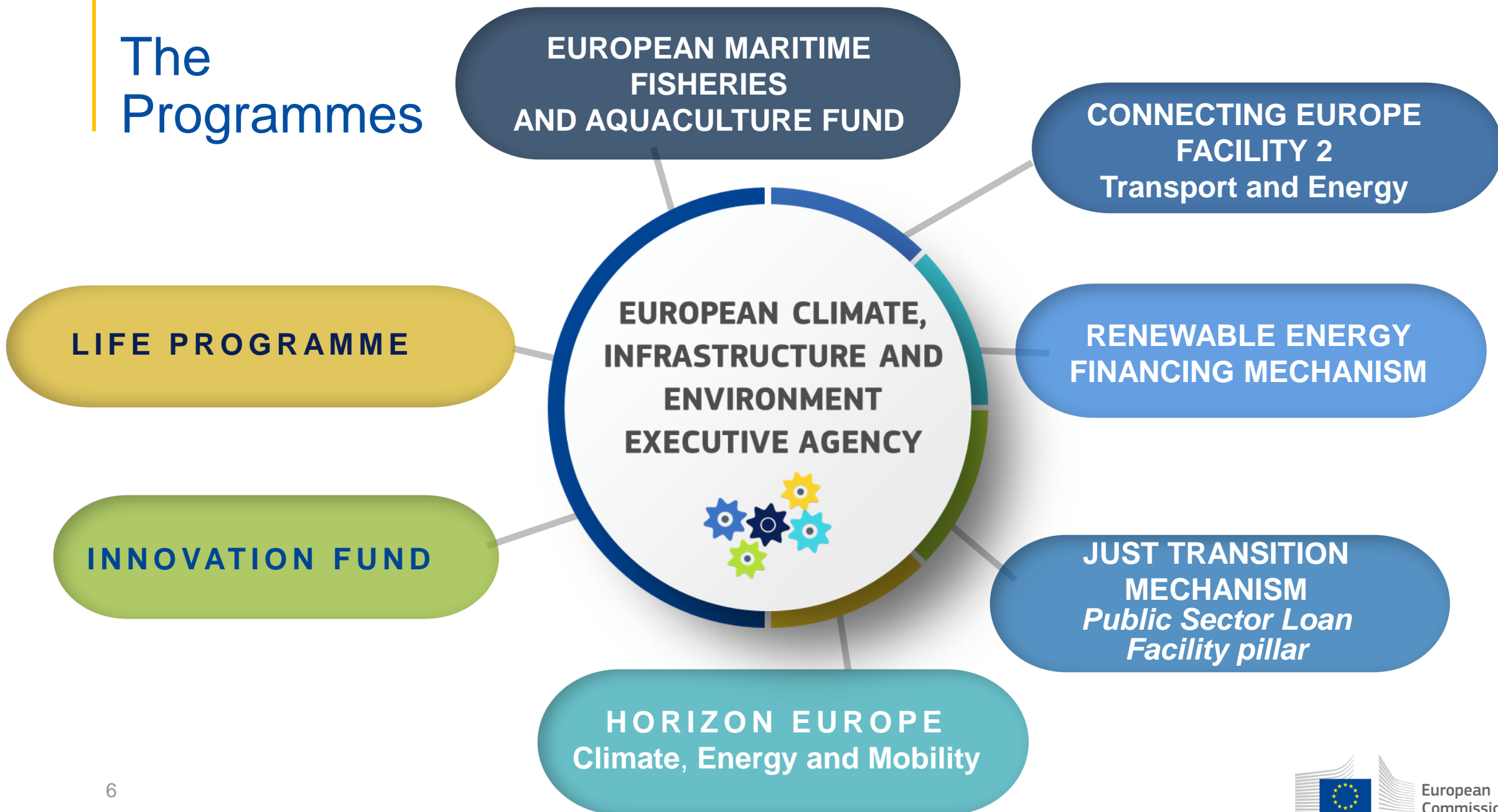
08.11.2023

CINEA, »the European Green Deal Agency «

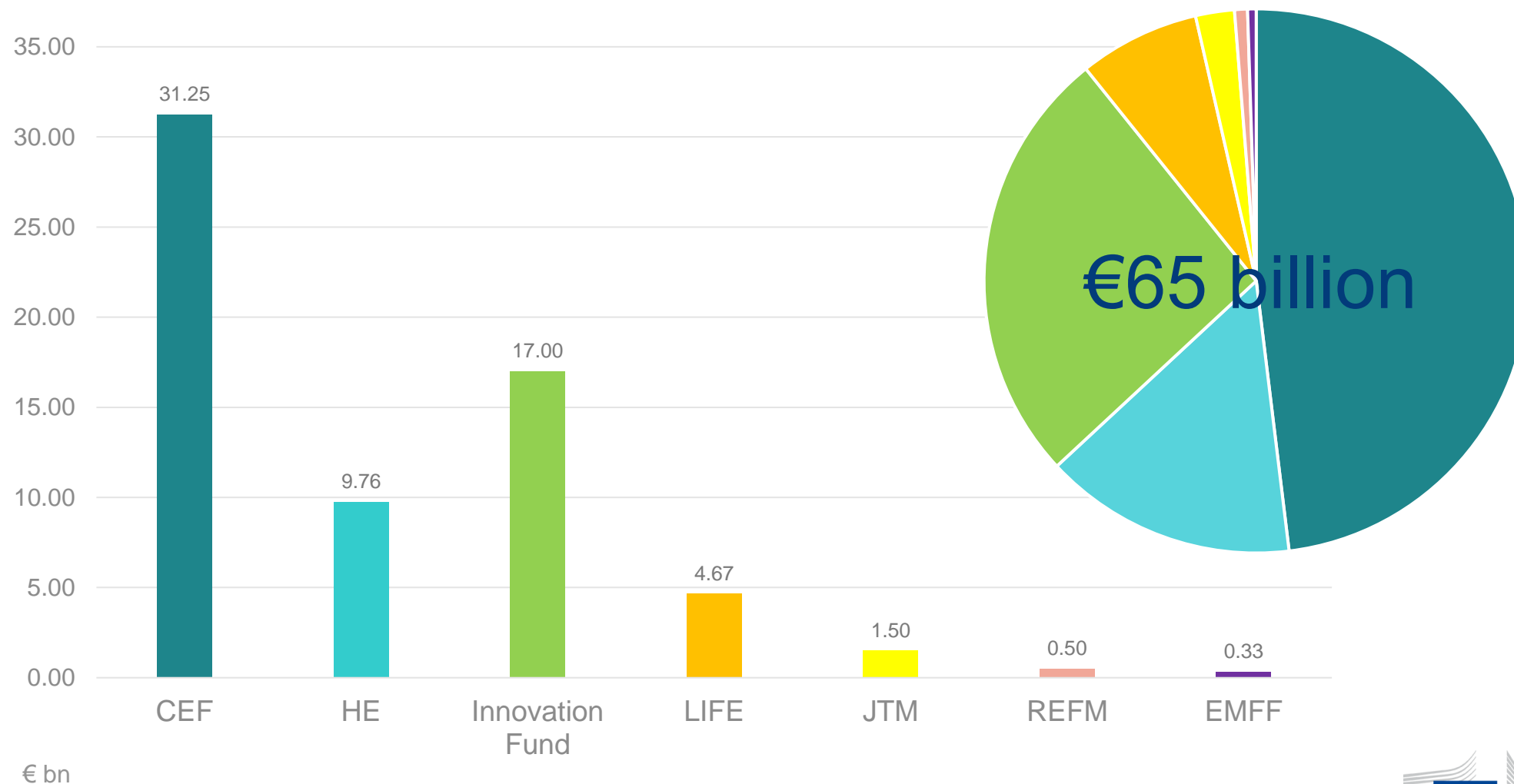


- Implementing CINEA's portfolio supports the **European Green Deal** - the roadmap for making the EU's economy **sustainable**
- Aiming to boost the efficient use of resources by moving to a clean circular economy, restore biodiversity, cut pollution, and achieve **climate neutrality by 2050**

The Programmes



CINEA's indicative budget per programme



Connecting Europe Facility (CEF2)



- Management of **CEF Transport and Energy**, supporting deployment of vital, modern **infrastructure and networks**
- Projects aim to speed up **decarbonisation** of the economy and encourage roll-out of **smarter** and **safer** solutions for transport and energy

Innovation Fund

INNOVATION FUND
Driving clean innovative technologies towards the market



- Supporting a **climate neutral Europe by 2050**
- Projects will:
 - **Help businesses** invest in clean energy and industry
 - **Boost economic growth**
 - **Create future-proof jobs**
 - **Reinforce European technological leadership** on a global scale.

Horizon Europe



- A **Climate, Energy and Transport portfolio**. **Next generation EU** actions will be spread over the three thematic areas
- Projects will focus on fighting **climate change**, and making the energy and transport sectors more **sustainable**



EU's funding instrument for the environment and climate action

LIFE supports projects in

- **nature & biodiversity**
- **circular economy and quality of life**
- **climate change mitigation and adaptation**
- **clean energy transition**

European Maritime, Fisheries and Aquaculture Fund (EMFAF)



- Targeting public support for the **Common Fisheries Policy (CFP)**, the **Integrated Maritime Policy (IMP)**, the **blue economy** and the EU's agenda for **international ocean governance**
- Projects support more sustainable fishing and aquaculture practices, the growth potential of the blue economy, protection of marine ecosystems, and mitigation of climate change

Just Transition Mechanism - PSLF



- The **Public Sector Loan Facility pillar** is a key tool to ensure that the transition towards a **climate-neutral economy** works for everyone
- Projects will provide targeted support in the most affected regions, to alleviate the **socio-economic impact** of the transition

Renewable Energy Financing Mechanism



- Supporting the achievement of the EU's **renewable energy targets** by increasing investment in Europe's renewable energy production capacity
- Projects will contribute to the **Clean Energy Transition** and the **European Green Deal**

GREEN ASSIST

The expert advice to make your investment **greener**



GREEN ASSIST offers:



Cost-benefit analysis, review of business model, financial structuring and planning, environmental due diligence, procurement support, etc.



Capacity building



Market studies & Market development activities

For projects addressing:

**Environmental
&
Non-Environmental
sectors**

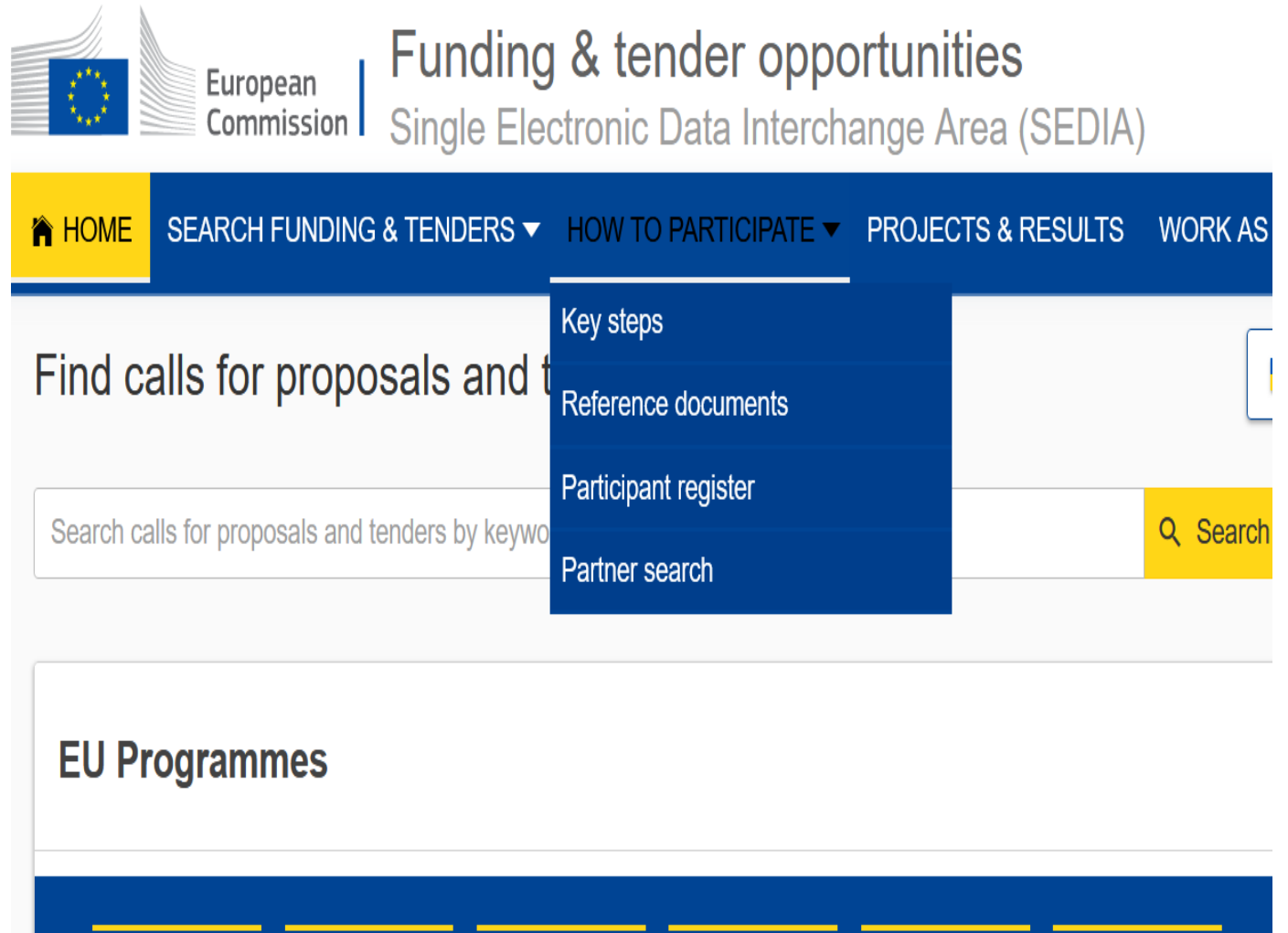


**Does my project qualify?
How to apply?**



How to apply?

- On **EU Funding and Tender opportunities** website helps select the funding opportunities.
- Follow the instructions
- Attend the Info Days for more information



Who can assist further?

- CEF2:
 - Transport: [national contact points](#), CINEA-CEF-TRANSPORT-CALLS@ec.europa.eu
 - Energy: [national contact points](#) , CINEA-CEF-ENERGY-CALLS@ec.europa.eu
 - Innovation Fund: [National Contact Points \(europa.eu\)](#)
- Horizon Europe: [Horizon Europe Cluster 5 Work Programme 2023-2024](#)
- LIFE: [LIFE National Contact Point](#), CINEA-LIFE-ENQUIRIES@ec.europa.eu
- EMFAF:
- Just Transition Mechanism: CINEA-JTMPSLF@ec.europa.eu
- Renewable Energy Financing Mechanism: CINEA-RENEWFM@ec.europa.eu
- Green Assist: [Green Advisory sustainable investments Green Assist](#)

Follow us



cinea.ec.europa



[@CINEA_EU](https://twitter.com/CINEA_EU)



[CINEA - European Climate, Infrastructure and Environment Executive Agency](https://www.linkedin.com/company/cinea-european-climate-infrastructure-and-environment-executive-agency)



[CINEATube](https://www.youtube.com/CINEATube)



[Paloma Aba Garrote](https://www.linkedin.com/in/PalomaAbaGarrote)



[@PalomaAbaEU](https://twitter.com/PalomaAbaEU)



[LIFE Programme](https://www.facebook.com/LIFEProgramme)



[@LIFEprogramme](https://twitter.com/LIFEprogramme)



[LIFE Programme](https://www.linkedin.com/company/life-programme)



[LIFE Programme](https://www.youtube.com/LIFEProgramme)



[lifeprogramme](https://www.instagram.com/lifeprogramme)



[@CleanEnergy_EU](https://twitter.com/CleanEnergy_EU)



[EU Sustainable Energy Week](https://www.facebook.com/EUSustainableEnergyWeek)



[@#EUSEW2021](https://twitter.com/EUSEW2021)



[euenergyweek](https://www.youtube.com/euenergyweek)